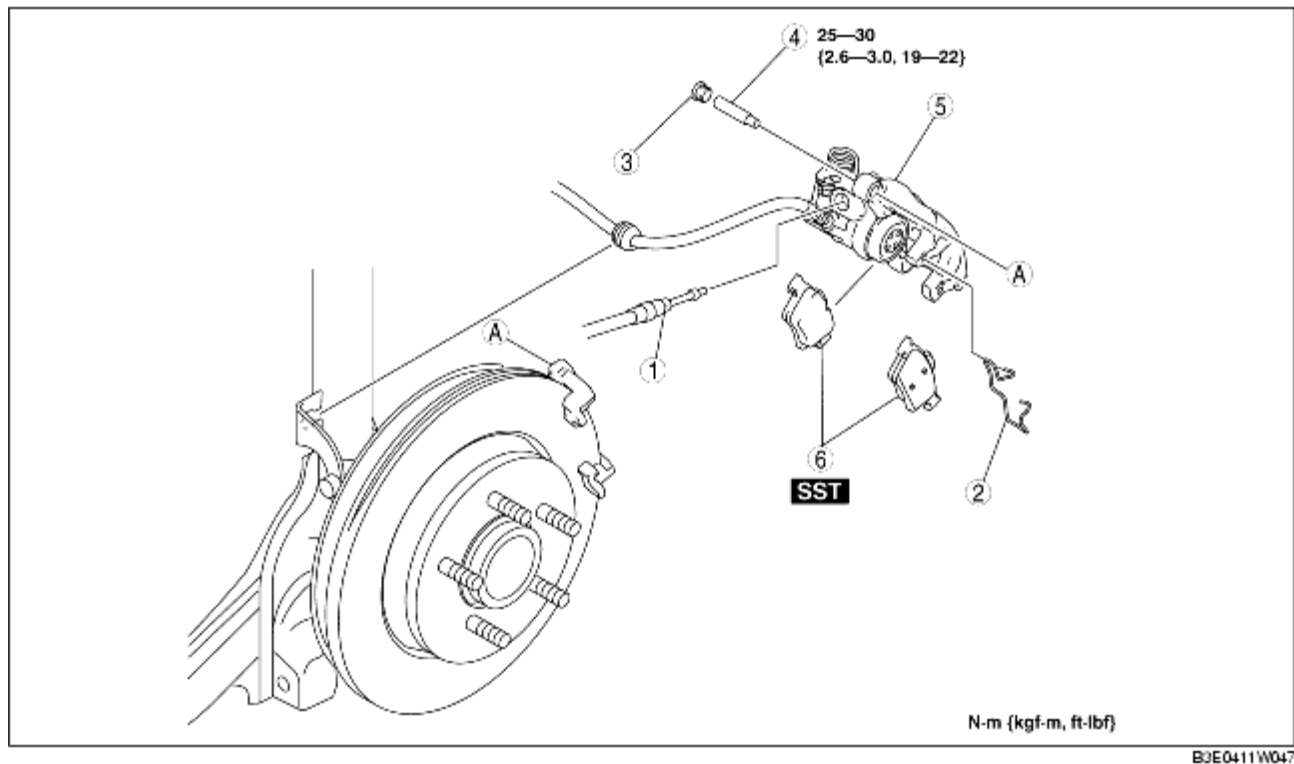


## DISC PAD (REAR) REPLACEMENT

B3E041126630W02

1. Remove in the order indicated in the table.
2. Install in the reverse order of removal.
3. After installation, pump the brake pedal a few times and inspect the following:
  - Parking brake lever stroke
  - Brake drag



1	Parking brake cable
2	Retaining clip
3	Cap
4	Bolt
5	Caliper
6	Disc pad (See <a href="#">Disc Pad Removal Note.</a> ) (See <a href="#">Disc Pad Installation Note.</a> )